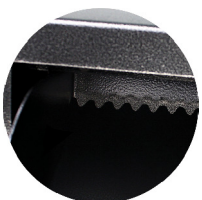
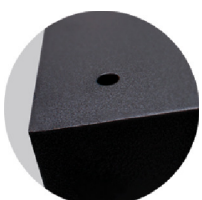
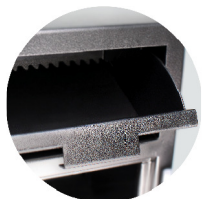


MFL2014k

MFL SERIES CASH MANAGEMENT BUSINESS SAFES



SPECIFICATIONS

| EXTERIOR [HWD] | INTERIOR [HWD] | INTERIOR [CU.FT.] | SHELVING [NO.] | WEIGHT |
|---------------------|------------------------|-------------------|----------------|--------|
| 20 1/4" x 14" x 14" | 8 7/8" x 13 3/4" x 11" | 0.8 | 0 | 90 lbs |

SAFE FEATURES

BODY & DOOR

- All steel construction
- 1/2" thick solid steel door
- 3 Massive 1" diameter solid steel locking bolts
- 1 high strength adjustable/removable shelf
- Full length solid steel dead-bar

- Front loading mail box style deposit door accepts large deposits
- Anti-fish baffle helps prevent fishing through the deposit door
- Heavy-duty solid steel hinges
- 4 Pre-drilled anchor holes [Anchor Kit included]

LOCK

- Lock protected by a drill resistant hard plate & punch-activated reloading system
- U.L. Listed dual key operated lock [2 Renter's Keys & 1 Guard Key included]

LOCK OPTIONS



2-TONE GRAY/BLACK